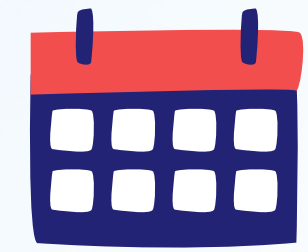


# Weekly Schedule



Participants can work 12 to 16 hours per week, with sessions scheduled as follows:

**9 am – 1 pm**

**4:30 – 7 pm**

**Monday**

**French Class**

**Free Time**

**Childcare & Teaching Sessions**

**Tuesday**

**French Class**

**Free Time**

**Childcare & Teaching Sessions**

**Wednesday**

**Childcare & Teaching Sessions**

**Thursday**

**French Class**

**Free Time**

**Childcare & Teaching Sessions**

**Friday**

**French Class**

**Free Time**

**Childcare & Teaching Sessions**

